

**CCNA | CCNP | CCIE**

**For Careers In Networking  
Security & Wireless**

**Be a Network Expert...  
Beyond Certification...**

**WHY WAIT  
WHEN THE TIME  
IS YOURS**



**www.xmetricsolutions.com**  
**020-3045 5678 / 901111 3456**  
**020-3045 5688 / 901111 3900**

**Routerinfotech**  
Beyond Certification



## Brief About Xmetric:

**Xmetric Solutions** is the specialized training center in Pune for CISCO CCNA, CCNP, CCIP, CCIE & F5 BIG-IP LTM Global Certifications Courses with international standards.

The success of our students was inspiring and so was their faith in Xmetric. It was this faith that was a catalyst for our venturing into areas beyond just Certifications and developing a real Technical Experts.

We have a state of the art fully equipped Networking Lab with more than 55 Networking equipments like Cisco Routers, L2 Switches, L3 Switches, Multi Layer Switches and Wireless Routers.

**Xmetric Solutions is the only Academy in India and even in the world providing Live NAT/PAT and Multisite VPN Projects to each and every students participating in any of the Training Program.**

At Xmetric Solutions, first we believe in strong Internetworking foundation and more hands on multiple Products, rather than just passing the certification.

**Be a Network Expert...**

**Beyond Certification....**

## Why Xmetric?

- ✓ **Highly credentialed training instructors with real-world knowledge and having core networking experience with reputed MNC.**
- ✓ **Advanced CISCO preparation lab with CISCO routers and switches.**  
  
(Cisco Layer 3 Switches, Multilayer Switches, Cisco Layer 2 Gigabit Switches, Cisco 2800 ISR Routers, Cisco 1800 Series ISR Routers, Cisco 2600 Series Routers, Cisco 1700 Series Routers, Cisco 2500 Series Routers, Cisco Wireless Routers, Gigabit Modules, WAN Modules, NM Modules, Channelized E1/T1 Modules, Cisco HWIC Cards ETC.)
- ✓ **100% Hands on real Cisco Routers, L2 Switches, L3 Switches, Wireless Router and Many More...**
- ✓ Limited number of seats per batch for personal attention
- ✓ **Customized practical workbook**
- ✓ High level of student interaction and class participation
- ✓ **Public IPS to play with NAT and PAT, and 24 hours internet connection**
- ✓ Most competitive pricing for all the courses
- ✓ Life time membership of Xmetric family

- ✓ Central location of the institute which makes commutation easy
- ✓ **Free Exam preparation batch after course completion**
- ✓ **Resume preparation and interview preparation**
- ✓ **A chance to work on Live projects**
- ✓ Technology updates via SMS, Email, Twitter, Yahoo Groups, Facebook.
- ✓ Technical discussion forum
- ✓ Xmetric Trophy for scholars achieving out of score.
- ✓ 100% Passing Results
- ✓ **Dedicated Placement Cell**
- ✓ **Dedicated Router and Switch to Every Student**
- ✓ **Live NAT/PAT Project to every student..**
- ✓ **Live Multisite VPN Connectivity Project to every student..**
- ✓ **We Say-We deliver and We deliver more than what we say.**

## Courses Offered:

### CCNA – ROUTING AND SWITCHING EXAM DESCRIPTION

**Cisco Certified Network Associate (CCNA)** certification is the first step to a career in Networking. By pursuing this certification you will enhance your skill sets, knowledge and ability to configure, manage and optimize network systems.

**CCNA (Cisco Certified Network Associate)** is one of the most valuable Global Cisco certifications and leading to a big jump in Networking Career.

In addition, **CCNA R&S** confirms an individual's skills for job roles such as:

- **Network Associate**
- **Network Engineer**
- **Technical Associate**
- **Network Administrator**
- **Network Support Engineer**

## Syllabus

### Networking Fundamentals

- Describe the purpose and functions of various network devices
- Select the components required to meet a network specification
- Use the OSI and TCP/IP models and their associated protocols to explain how data flows in a network
- Describe common networked applications including web applications
- Describe the purpose and basic operation of the protocols in the OSI and TCP models
- Determine the path between two hosts across a network
- Network and Internet communications
- Identify and correct common network problems at layers 1, 2, 3 and 7 using a layered model approach
- Differentiate between LAN and WAN operation and features.

### Planning & Designing

- Design a simple LAN using Cisco Technology
- Design an IP addressing scheme to meet design requirements
- Select an appropriate routing protocol based on user requirements
- Design a simple internetwork using Cisco technology
- Develop an access list to meet user specifications
- Choose WAN services to meet customer requirements

### Implementation & Operation

- Design a simple LAN using Cisco Technology
- Design an IP addressing scheme to meet design requirements
- Select an appropriate routing protocol based on user requirements
- Design a simple internetwork using Cisco technology
- Develop an access list to meet user specifications

- Choose WAN services to meet customer requirements

### Troubleshooting

- Utilize the OSI model as a guide for systematic network troubleshooting
- Perform LAN and VLAN troubleshooting
- Troubleshoot routing protocols
- Troubleshoot IP addressing and host configuration
- Troubleshoot a device as part of a working network
- Troubleshoot an access list
- Perform simple WAN troubleshooting

### Technology

- Describe network communications using layered models
- Describe the Spanning Tree process
- Compare and contrast key characteristics of LAN environments
- Evaluate the characteristics of routing protocols
- Evaluate TCP/IP communication process and its associated protocols
- Describe the components of network devices
- Evaluate rules for packet control
- Evaluate key characteristics of WANs

### CCNA Labs

Sr. No.	Name of Lab	Yes	No
1)	- Installation, Configuration & Verification Of WEB & FTP Server On Live Windows OS. - Configuration of your own Website and Accessing the same from Remote machines -Configuration of FTP Server and Downloading and uploading of Files from Remote Machines		
2)	Address Resolution Protocol (ARP) Lab On Live Router		
3)	Router Basic Configuration On Live Router		
4)	Router Password Recovery On Live Router		
5)	Router as a DHCP Server On Live Router and Switches		
6)	Basic Routing (Using Static IP's) on Live Multiple Routers		
7)	Basic Routing (Using Dynamic IP's) on Live Multiple Routers		
8)	Static Routing(Within LAN) on Live Multiple Routers		
9)	Static Routing(Within WAN) on Live Multiple Routers		
10)	Static Routing & Default Routing on Live Multiple Routers		
11)	Floating Static & Floating Default Routing on Live Multiple Routers		
12)	Switch Basic Configuration On Live L2 Switch		
13)	Routing Information Protocol Version 1 (RIPv1) on Live Multiple Routers		

14)	Routing Information Protocol Version 2 (RIPv2) on Live Multiple Routers		
15)	RIPv2 with redistribute connected cmd on Live Multiple Routers		
16)	RIPv2 with default-information originate cmd on Live Multiple Routers		
17)	EIGRP Lab – Equal Cost Load Balance on Live Multiple Routers		
18)	EIGRP Lab – Unequal Cost Load Balance on Live Multiple Routers		
19)	Open Shortest Path First (OSPF) – Multiple Areas Lab on Live Multiple Routers		
20)	Cisco Discovery Protocol (CDP) On Live Multiple Layer2 Switches and Routers		
21)	Virtual Local Area Network (VLAN) On Live Layer3 Switches and MLS (Multilayer Switches) Cisco 3560 and Cisco 3750 Switches		
22)	VLAN Trunking ,Native VLAN On Live Multiple Layer2 Switches		
23)	Dynamic Trunking Protocol (DTP) On Live Multiple Layer2 Switches		
24)	Inter VLAN Routing – Router on a stick method On Live Router and L2 Switches		
25)	Inter VLAN Routing – SVI (Switched VLAN Interface) method On Live Layer3 Switches and MLS (Multilayer Switches) Cisco 3560 and Cisco 3750 Switches		
26)	VLAN Trunking Protocol (VTP) On Live Multiple Layer2 Switches		
27)	Spanning Tree Protocol (STP) On Live Multiple Layer2 Switches		
28)	Per VLAN STP (PVSTP) On Live Multiple Layer2 Switches		
29)	Rapid PVSTP (RPVSTP/RSTP) On Live Multiple Layer2 Switches		
30)	Switch Basic Security (Port Security) On Live Multiple Layer2 Switches		
31)	Standard Access Control List (Numbered) On Live Router		
32)	Standard Access Control List (Named) On Live Router		
33)	Extended Access Control List (Numbered) On Live Router		
34)	Extended Access Control List (Named) On Live Router		
35)	Reflexive ACL / Established ACL Lab On Live Router		
36)	Port Address Translation (PAT) / NAT Overload On Live Internet Link and Router		
37)	Static NAT On Live Internet Link and Router		
38)	Dynamic NAT without Overload On Live Internet Link and Router		
39)	Dynamic NAT with Overload On Live Internet Link and Router		
40)	High Level Data Link Control (HDLC) Lab On Live Router		
41)	Point-to-Point Protocol (PPP) Lab on Live Routers		
42)	PPP with Password Authentication Protocol (PAP) on Live Routers		
43)	PPP with Challenge Handshake Authentication Protocol (CHAP)		



	on Live Routers		
44)	Configuring Frame Relay for a single neighbor On Live Frame Relay Switch and Routers		
45)	Configuring Frame Relay for a Multipoint Sub interface On Live Frame Relay Switch and Routers		
46)	Configuring frame Relay for a Point-to-Point Sub interface On Live Frame Relay Switch and Routers		
47)	Site-to-Site Virtual Private Network (VPN) On Live Cisco Routers		
48)	IPv6 Configuration (Static Routing) On Live Routers		
49)	Wireless Practical, Wireless Security (WEP,WPA) On Live Wireless Access Point		
50)	Router Backup Creation & Recovery (Configuration Files & IOS) On Live Routers		
51)	Router Crash and IOS Recovery using different recovery methods on Live Routers		
52)	Telnet & SSH access of Router Wireshark – Packet Analyzer Lab : Packet Capture and Troubleshooting using Packet Capture		
53)	Switch Password Recovery on Live Cisco Switch		
54)	Switch Backup Creation & Recovery (Configuration Files & IOS) on Live Switches		
55)	Switch Crash and IOS Recovery using different recovery methods on Live Switches		
56)	Security Device Manager (SDM) Installation, Configuration & Verification On Live ISR Routers Cisco 1800 and Cisco 2800 Routers		
57)	Live Project on NAT/PAT Configuration		
58)	Live Cisco Static NAT Project Accessing Live Video Shooting/Streaming Anywhere from Internet		
59)	Live Project On Multisite VPN Tunneling Every Participant will get : <ul style="list-style-type: none"> <li>✓ Two Sites</li> <li>✓ ISR Routers Cisco 1800/2800 : 2 Nos</li> <li>✓ Cisco 2950/ 2960 Switches : 2 Nos</li> <li>✓ 2 PCs at each site</li> <li>✓ Accessing Web Servers and RDP from Site-A to Site-B and vice versa</li> <li>✓ Project Report signoff</li> </ul>		
60)	Physical verification and Study Of Live Cisco Routers <ul style="list-style-type: none"> <li>✓ Cisco 2811 ISR Router</li> <li>✓ Cisco 2801 ISR Router</li> <li>✓ Cisco 1841 ISR Router</li> <li>✓ Cisco 1812 ISR Router</li> <li>✓ Cisco 2621 XM Router</li> <li>✓ Cisco 2611 XM Router</li> <li>✓ Cisco 2610 XM Router</li> <li>✓ Cisco 2650 XM Router</li> <li>✓ Cisco 2610 Router</li> <li>✓ Cisco 1712 Router</li> <li>✓ Cisco 1721 Router</li> <li>✓ Cisco 2503 Router</li> </ul>		

	<ul style="list-style-type: none"> <li>✓ Wireless Router</li> <li>✓ WIC 1T</li> <li>✓ WIC 2T</li> <li>✓ ISDN BRI S-T</li> <li>✓ NM-8AS</li> <li>✓ HWIC Cards</li> </ul>		
61)	<p>Physical verification and Study Of Live Cisco Switches</p> <ul style="list-style-type: none"> <li>✓ Cisco 3750G-E Layer 3, Multilayer &amp; Stackable Switch</li> <li>✓ Cisco 3750 MLS Switch</li> <li>✓ Cisco 3560 L3/MLS Switch</li> <li>✓ Cisco 3560 POE L3/MLS Switch</li> <li>✓ Cisco 3550 Layer 3 Switches</li> <li>✓ Cisco 2950 Layer 2 Switches</li> <li>✓ Cisco 2960 Layer 2 Switches</li> <li>✓ Cisco 1900 Layer 2 Switch</li> </ul>		



## **CCNP-ROUTE (642-902)**

### **Implement an EIGRP based solution, given a network design and a set of requirements**

- Determine network resources needed for implementing EIGRP on a network
- Create an EIGRP implementation plan
- Create an EIGRP verification plan
- Configure EIGRP routing
- Verify EIGRP solution was implemented properly using show and debug commands
- Document results of EIGRP implementation and verification

### **Implement a multi-area OSPF Network, given a network design and a set of requirements**

- Determine network resources needed for implementing OSPF on a network
- Create an OSPF implementation plan
- Create an OSPF verification plan
- Configure OSPF routing
- Verify OSPF solution was implemented properly using show and debug commands
- Document results of OSPF implementation and verification plan

### **Implement an eBGP based solution, given a network design and a set of requirements**

- Determine network resources needed for implementing eBGP on a network
- Create an eBGP implementation plan
- Create an eBGP verification plan
- Configure eBGP routing
- Verify eBGP solution was implemented properly using show and debug commands
- Document results of eBGP implementation and verification plan

### **Implement an IPv6 based solution, given a network design and a set of requirements**

- Determine network resources needed for implementing IPv6 on a network
- Create an IPv6 implementation plan
- Create an IPv6 verification plan
- Configure IPv6 routing
- Configure IPv6 interoperation with IPv4
- Verify IPv6 solution was implemented properly using show and debug commands
- Document results of IPv6 implementation and verification plan

### **Implement an IPv4 or IPv6 based redistribution solution, given a network design and a set of requirements**

- Create a redistribution implementation plan based upon the results of the redistribution analysis
- Create a redistribution verification plan
- Configure a redistribution solution
- Verify that a redistribution was implemented
- Document results of a redistribution implementation and verification plan
- Identify the differences between implementing an IPv4 and IPv6 redistribution solution

### **Implement Layer 3 Path Control Solution**

- Create a Layer 3 path control implementation plan based upon the results of the redistribution analysis
- Create a Layer 3 path control verification plan

- Configure Layer 3 path control
  - Verify that a Layer 3 path control was implemented
  - Document results of a Layer 3 path control implementation and verification plan
  - Implement basic teleworker and branch services
  - Describe broadband technologies
  - Configure basic broadband connections
  - Describe basic VPN technologies
  - Configure GRE
-

## **CCNP-SWITCH (642-813)**

### **Implement VLAN based solution, given a network design and a set of requirements**

- Determine network resources needed for implementing a VLAN based solution on a network
- Create a VLAN based implementation plan
- Create a VLAN based verification plan
- Configure switch-to-switch connectivity for the VLAN based solution Configure loop prevention for the VLAN based solution
- Configure Access Ports for the VLAN based solution. Verify the VLAN based solution was implemented properly using show and debug commands Document results of VLAN implementation and verification

### **Implement a Security Extension of a Layer 2 solution, given a network design and a set of requirements**

- Determine network resources needed for implementing a Security solution
- Create a implementation plan for the Security solution
- Create a verification plan for the Security solution
- Configure port security features
- Configure general switch security features
- Configure private VLANs Configure VACL and PACL Verify the Security based solution was implemented properly using show and debug commands Document results of Security implementation and verification

### **Implement Switch based Layer 3 services, given a network design and a set of requirements**

- Determine network resources needed for implementing a Switch based Layer 3 solution
- Create an implementation plan for the Switch based Layer 3 solution
- Create a verification plan for the Switch based Layer 3 solution Configure routing interfaces Configure Layer 3 Security
- Verify the Switch based Layer 3 solution was implemented properly using show and debug commands
- Document results of Switch based Layer 3 implementation and verification

### **Prepare infrastructure to support advanced services**

- Implement a Wireless Extension of a Layer 2 solution
- Implement a VoIP support solution
- Implement video support solution

### **Implement High Availability, given a network design and a set of requirements**

- Determine network resources needed for implementing High Availability on a network
  - Create a High Availability implementation plan
  - Create a High Availability verification plan
  - Implement first hop redundancy protocols
  - Implement switch supervisor redundancy Verify High Availability solution was implemented properly using show and debug commands Document results of High Availability implementation and verification
-

## **CCNP-TSHOOT (642-832)**

### **Maintain and monitor network performance**

- Develop a plan to monitor and manage a network
- Perform network monitoring using IOS tools
- Perform routine IOS device maintenance
- Isolate sub-optimal internetwork operation at the correctly defined OSI Model layer

### **Troubleshoot Multi Protocol system networks**

- Troubleshoot EIGRP
- Troubleshoot OSPF
- Troubleshoot eBGP
- Troubleshoot routing redistribution solution
- Troubleshoot a DHCP client and server solution
- Troubleshoot NAT
- Troubleshoot first hop redundancy protocols
- Troubleshoot IPv6 routing
- Troubleshoot IPv6 and IPv4 interoperability
- Troubleshoot switch-to-switch connectivity for the VLAN based solution
- Troubleshoot loop prevention for the VLAN based solution
- Troubleshoot Access Ports for the VLAN based solution
- Troubleshoot private VLANS
- Troubleshoot port security
- Troubleshoot general switch security
- Troubleshoot VACL and PACL
- Troubleshoot switch virtual interfaces (SVIs)
- Troubleshoot switch supervisor redundancy
- Troubleshoot switch support of advanced services (i.e., Wireless, VOIP and Video)
- Troubleshoot a VoIP support solution
- Troubleshoot a video support solution
- Troubleshoot Layer 3 Security
- Troubleshoot issues related to ACLs used to secure access to Cisco routers
- Troubleshoot configuration issues related to accessing the AAA server for authentication purposes
- Troubleshoot security issues related to IOS services (NTP, HTTP, FTP, RCP etc.)

### **Xmetric Awards:**

We always keep encouraging our students by giving different kinds of Awards like Best Performance, Top Scorer in Internal Tests, and Excellence Award to Alumni who scores 1000/1000 in Global Certification Exams.



**Xmetric Excellence Award  
For Scoring 1000/1000**

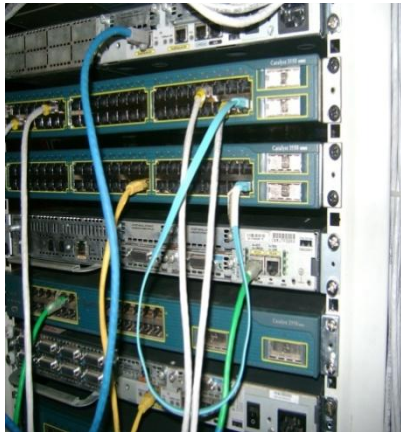
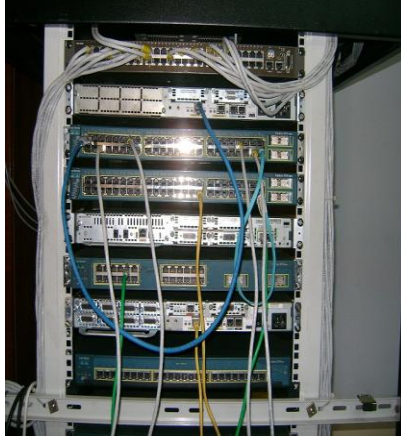


**Xmetric Best Performance and Spot Award**

## Xmetric Lab:

We offer advanced Cisco equipments Training Rack to ensure your CCNA, CCNP and CCIE Lab work.

Our updated Training lab is also equipped with Wireless Internet Connectivity for student's Laptop.



### Xmetric Cisco LAB Details:

#### ROUTERS:

Cisco ISR 2811  
Cisco ISR 2801  
Cisco ISR 1841  
Cisco ISR 1812  
Cisco 2651  
Cisco 2621  
Cisco 2611  
Cisco 1751  
Cisco 1721  
Cisco 1721  
Cisco 2503  
Cisco 2509

#### SWITCHES:

Cisco 3750 MLS/L3 Switches  
Cisco 3560 MLS/L3 Switches  
Cisco 3560 MLS POE Switch  
Cisco 3550 Layer 3 Switches  
Cisco 2960 Layer 2 Switches  
Cisco 2950-G Layer 2 Switches  
Cisco 1900 Switch

#### Wireless:

Cisco Linksys Wireless Router

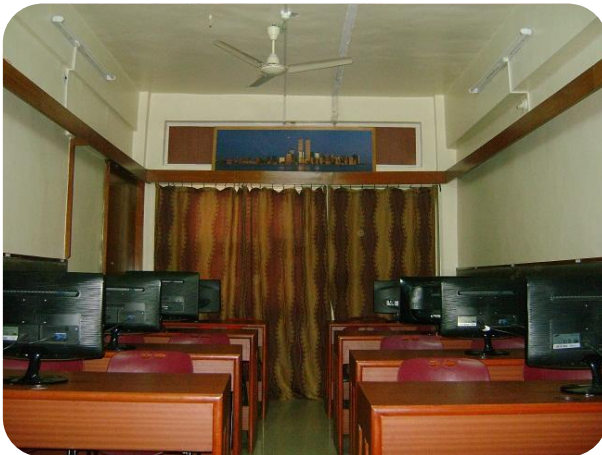
#### Modules:

Cisco NM-8AS  
BRI  
Channelized E1/T1s  
HWIC  
WIC-2Ts  
WIC-1Ts  
HWIC-4S/W  
NM-4T  
Serial Cables  
Back to Back Serial Cables  
Cisco SFP Fiber Modules  
S/T, S/C, LC Fiber Cords

And the list continues.....



## Xmetric Lab:



### LAB-1 @ Head Office, Karve Road

Cool Infrastructure to Enjoy the Theory sessions and Lab Sessions.

### LAB-2 @ Head Office, Karve Road

Dedicated Lab to enjoy more hands on real Cisco Routers, Switches and Wireless Routers any time and for Exam Preparation.

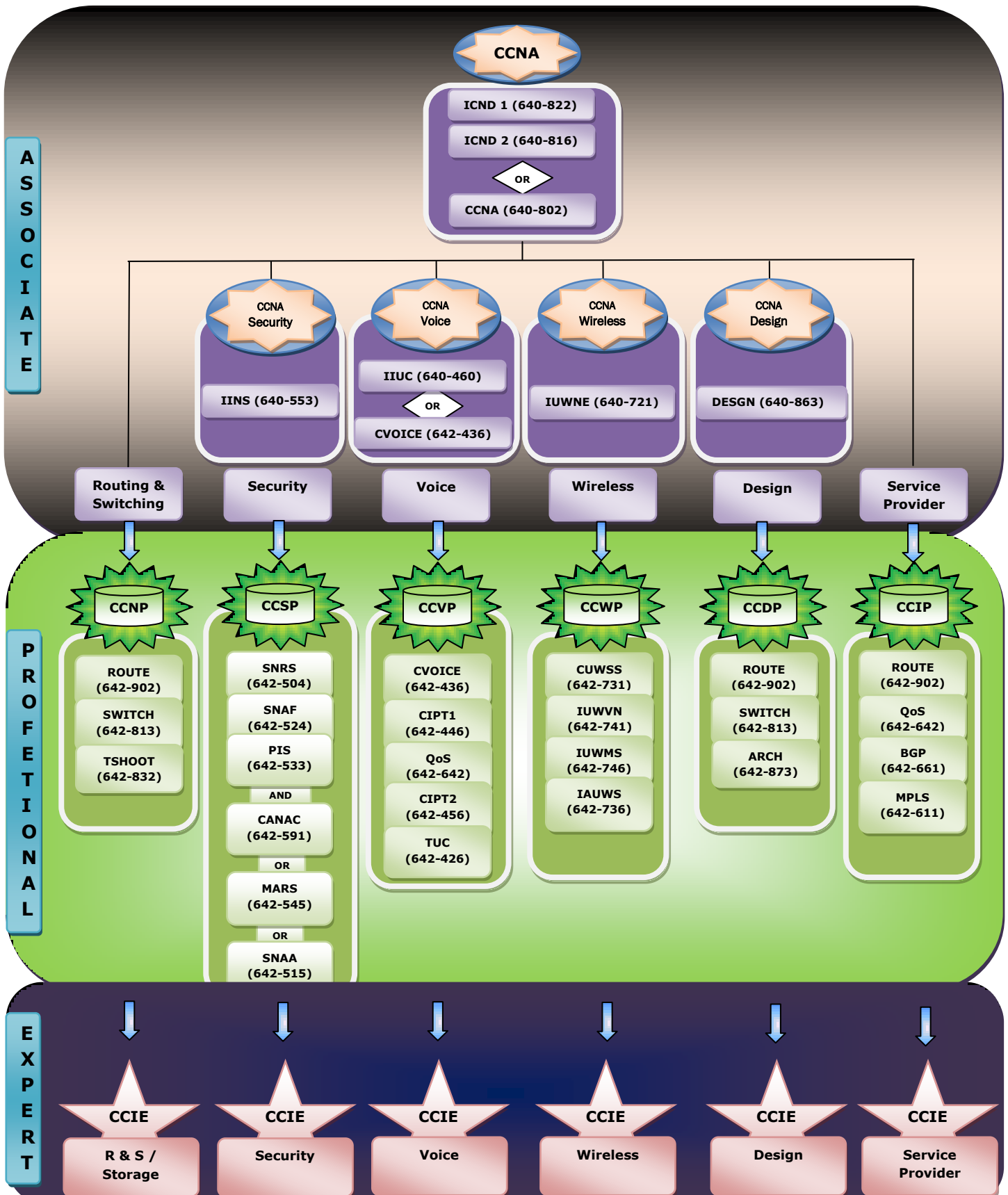


### "Xmetric Career Guidance Center" @ FC Road.

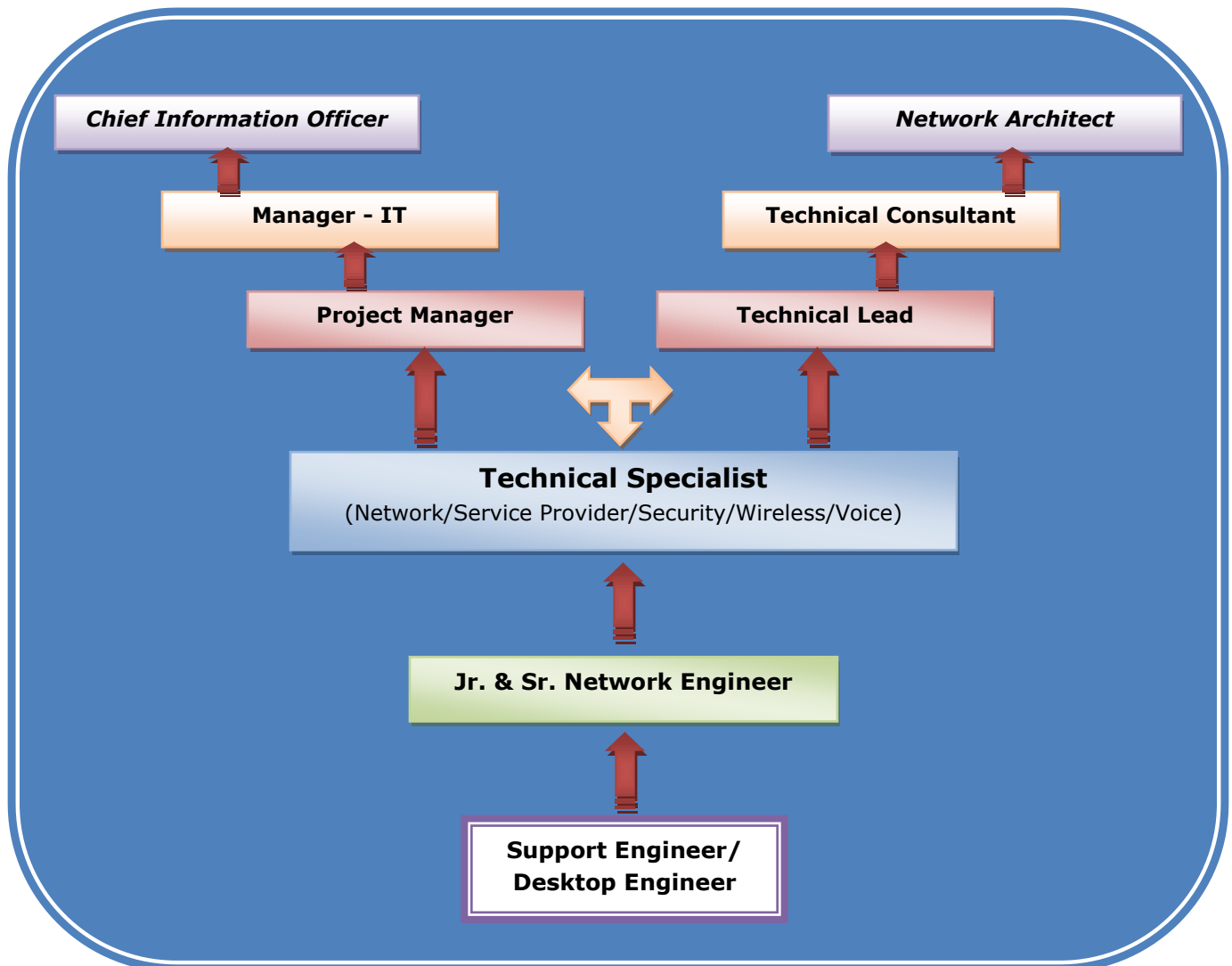
For Career Guidance, Exam Practice, Lab Practice etc..



## Cisco Career Certifications Path:



## Networking Career Growth:



## Placements Services:

**Training and Placement Cell** in the **Xmetric Solutions** plays a vital role and is becoming a key department of the company. A full pledged placement cell is functioning in our company with a full time placement officer.

Our Training and Placement Cell is performing the following activities:-

- Human Resources & Manpower Consultants
- Recruitment & Placement services in all major cities in India
- Campus Interviews conducted on behalf of Clients
- Employees on contract basis
- Payroll Processing
- Assessment centre, Employee soft skills Training and Performance Appraisals
- Customized Training for the Employees as per Client Requirements
- Ongoing Technical Training for Employees to fulfill and perform better at Client site

### **Apply For Job**

Please send your resume to [placements@xmetricsolutions.com](mailto:placements@xmetricsolutions.com)

## Detailed Course Syllabus:

CCNA (R/S)	:	<a href="http://www.xmetricsolutions.com/html/ccna-rs.html">www.xmetricsolutions.com/html/ccna-rs.html</a>
CCNP (ROUTE)	:	<a href="http://www.xmetricsolutions.com/html/ccnp_route.html">www.xmetricsolutions.com/html/ccnp_route.html</a>
CCNP (SWITCH)	:	<a href="http://www.xmetricsolutions.com/html/ccnp_switch.html">www.xmetricsolutions.com/html/ccnp_switch.html</a>
CCNP (TSHOOT)	:	<a href="http://www.xmetricsolutions.com/html/ccnp_tshoot.html">www.xmetricsolutions.com/html/ccnp_tshoot.html</a>
CCNA (SECURITY)	:	<a href="http://www.xmetricsolutions.com/html/ccna_securitycertific.html">www.xmetricsolutions.com/html/ccna_securitycertific.html</a>
CCIE (R/S)	:	<a href="http://www.xmetricsolutions.com/html/ccie.html">www.xmetricsolutions.com/html/ccie.html</a>
F5 BIG – IP LTM (ESS)	:	<a href="http://www.xmetricsolutions.com/html/f5-ltm-essential.html">www.xmetricsolutions.com/html/f5-ltm-essential.html</a>
F5 BIG – IP LTM (ADV)	:	<a href="http://www.xmetricsolutions.com/html/f5-ltm-advanced.html">www.xmetricsolutions.com/html/f5-ltm-advanced.html</a>

## Contact Details:

1. Mr. Amit Sengar, Technical Specialist	+91 9011113007
2. Mr. Amit Challelwar, Technical Specialist	+91 9011113900
3. Mr. Ganesh Hendre, Technical Specialist	+91 9011113444
4. Mrs. Manjiri Tilak, Technical Specialist	+91 9970859136
5. Mr. Vishal Nalavade (Placement Head)	+91 9011115678
6. Mr. Nitin Kulkarni, Director	+91 9011113456
7. Head Office	020 30455678
8. Branch Office	020 30455688

**Batch Schedule:**

Sr. No.	Course	Duration	Timings
1	CCNA (R/S)	Regular Batch (2 Months)	7.30 - 9.30 AM
			10.00 AM - 12.00 PM
			7.00 - 9.00 PM
		Fast Track Batch (20 Days)	10.00AM - 2.00 PM
		Weekend Batch	SAT 6.00 - 9.00 PM
			SUN 9.00 AM - 1.00 PM
2	CCNP (ROUTE)	Regular Batch (1 Month)	7.30 - 9.30 AM
			7.00 - 9.00 PM
		Weekend Batch	SAT 6.00 - 9.00 PM
			SUN 9.00 AM - 2.00 PM
3	CCNP (SWITCH)	Regular Batch (1 Month)	7.30 - 9.30 AM
			7.00 - 9.00 PM
		Weekend Batch	SAT 6.00 - 9.00 PM
			SUN 9.00 AM - 2.00 PM
4	CCNP (TSHOOT)	Special Crash Course (2 Days Only)	10.00 AM - 5.00 PM
5	CCNA (SECURITY)	Regular Batch (1 Month)	7.30 – 9.30 AM
			10.00 AM - 12.00 PM
6	F5 BIG – IP LTM ESSENTIAL	3 Days Bootcamp	10.00 AM - 5.00 PM
7	F5 BIG – IP LTM ADVANCED	3 Days Bootcamp	10.00 AM - 5.00 PM

For new batch schedule please visit:

[http://www.xmetricsolutions.com/html/training\\_schedule.html](http://www.xmetricsolutions.com/html/training_schedule.html)



## Xmetric Solutions Pvt. Ltd.

### Head Office:

Office No 12/13/14, 1st Floor,  
Continental Chambers, Near Sonal Hall,  
Karve Road, Pune-04

020 3045 5678 / +91 901111 3444 / 3456

### Branch Office:

#### “Xmetric Career Guidance Center”

Office No. 8, Ground Floor, C-Wing, Shreenath Plaza,  
Dnyaneshwar Paduka Chouk, FC Road, Pune-04

020 3045 5688 / +91 901111 3007 / 3900

Web

[www.xmetricsolutions.com](http://www.xmetricsolutions.com)

Email

[contact@xmetricsolutions.com](mailto:contact@xmetricsolutions.com)

Placement

[placements@xmetricsolutions.com](mailto:placements@xmetricsolutions.com)

Facebook

<http://facebook.com/xmetricsolutions>

Twitter

<http://twitter.com/Xmetric>

Youtube

[www.youtube.com/user/Xmetricsolutions](http://www.youtube.com/user/Xmetricsolutions)

JustDial Guarantee

[www.justdial.com/Pune/Xmetric-Solutions-Private-Limited](http://www.justdial.com/Pune/Xmetric-Solutions-Private-Limited)

Sulekha.com

[http://yellowpages.sulekha.com/pune/xmetric-solutions-pvt-ltd-karve-nagar-pune\\_contact-address.htm?business=mpm#](http://yellowpages.sulekha.com/pune/xmetric-solutions-pvt-ltd-karve-nagar-pune_contact-address.htm?business=mpm#)